

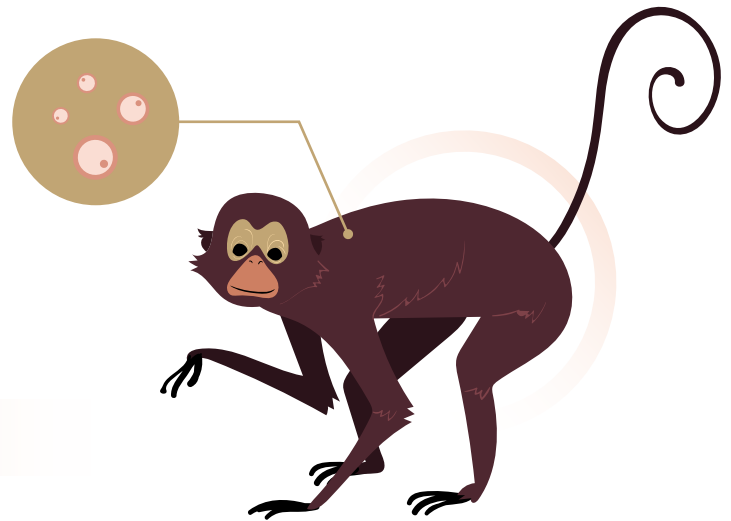
Monkeypox Virus Detection Kit

ANTIBODY

HIGH
ACCURACY



Monkeypox is a rare disease caused by infection from the monkeypox virus. It is a disease of global public health importance as it not only affects countries in west and central Africa, but the rest of the world. Human-to-human transmission can result from close contact with respiratory secretions, skin lesions of an infected person or recently contaminated objects. Transmission via droplet respiratory particles usually requires prolonged face-to-face contact, which puts health workers, household members and other close contacts of active cases at greater risk.



It is characterized by the following symptoms:



Swollen Lymph Nodes

This is a key symptom that distinguishes from other pox diseases



Muscle Aches



Fever



Headache



Rash

Within 1-3 days after fever, monkeypox is characterized by a rash of pustules that begin on the face and spread to other regions of the body.



Sample type: Plasma & Serum, Whole blood



High sensitivity & Simple operation

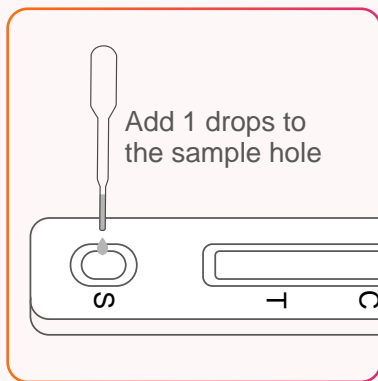


Fast, results can be seen in 10 minutes

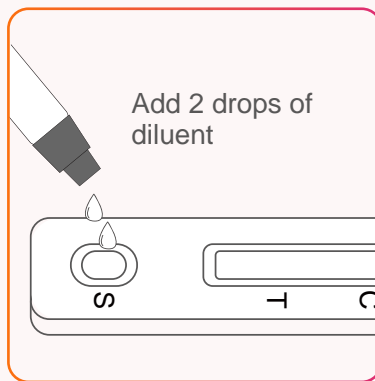


Accuracy above 95%

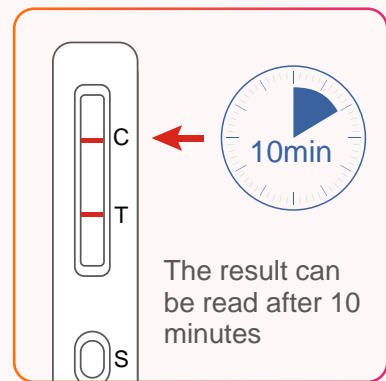
Plasma & Serum & Whole blood



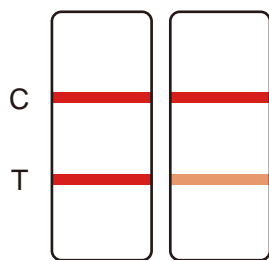
01



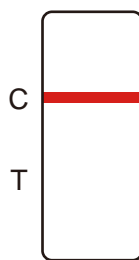
02



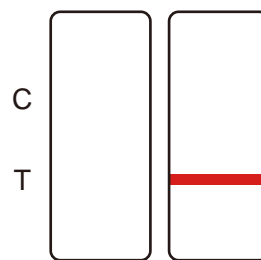
03



Positive



Negative



Invalid

Nanjing Synthgene Medical Technology Co., Ltd.

Building B6-2, No. 9, Weidi Road, Xianlin University Town, Xianlin Subdistrict, Qixia District, Nanjing City, China